

NOW OPEN TO BOYS



SIXTH FORM PROSPECTUS

SEPTEMBER 2025 ENTRY



**ST. ANNE'S
SIXTH FORM**

**AN OUTSTANDING &
WORLD CLASS SCHOOL**

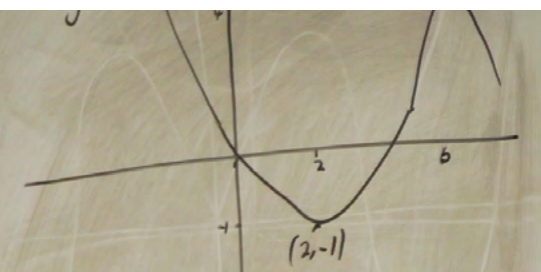


AIMING HIGH

$$y = -f(2x)$$

$$A(2, -1) \quad x \times \frac{1}{2}$$
$$x = 2 \times \frac{1}{2} = 1$$
$$y \times -1$$
$$-1 \times -1 = 1$$

$$B(6, 4)$$
$$x \times \frac{1}{2}$$
$$x = 6 \times \frac{1}{2} = 3$$
$$y \times -1$$
$$-4 \times -1 = 4$$



$$A(2, -1)$$
$$2f(x+2)$$

Move left 2

$$(x-2)$$
$$x = 2 - 2 = 0$$

Multiply by 2

$$y = -1 \times 2 = -2$$
$$(0, -2)$$

2

3



I WOULD LIKE TO OFFER YOU

A VERY WARM WELCOME

TO ST. ANNE'S SIXTH FORM CENTRE

Our Sixth Form offers a broad range of A Level and BTEC Level 3 courses. We think of ourselves as a learning family and provide a nurturing, close-knit environment where students are treated as individuals. Our dedicated Sixth Form team are committed to providing outstanding pastoral support and an atmosphere of academic excellence for the young people in our care.

Lessons in our Sixth Form are challenging and stimulating and our teachers are highly effective practitioners. Students are encouraged to be ambitious and intellectually curious and they are able to achieve excellent outcomes, moving on to universities that include Oxford, Cambridge and the Russell Group and to competitive courses like Medicine.

Our popular sixth form provides the opportunity for students to become effective independent learners, extend their academic knowledge and develop skills that will be invaluable at university and in the workplace.

All students complete an enrichment course, where they receive guidance and advice on time management for successful study, the university application process, revision skills and preparation for higher education. Guest speakers from universities, colleges, charities and private enterprises inspire our students to achieve, and we actively encourage our students to attend open days and taster courses.

Whatever their next step may be, our students leave well prepared for any challenges that they may face.

KATHERINE HYLAND
ASSISTANT HEADTEACHER

A LEVEL

ARTS

ART
DRAMA
MUSIC

HUMANITIES

ECONOMICS
ENGLISH LITERATURE
GEOGRAPHY
HISTORY
MEDIA
POLITICS
PSYCHOLOGY
RS: PHILOSOPHY & ETHICS
SOCIOLOGY

STEM

BIOLOGY
CHEMISTRY
COMPUTER SCIENCE
CORE MATHS
MATHEMATICS
PHYSICS
PHYSICAL EDUCATION

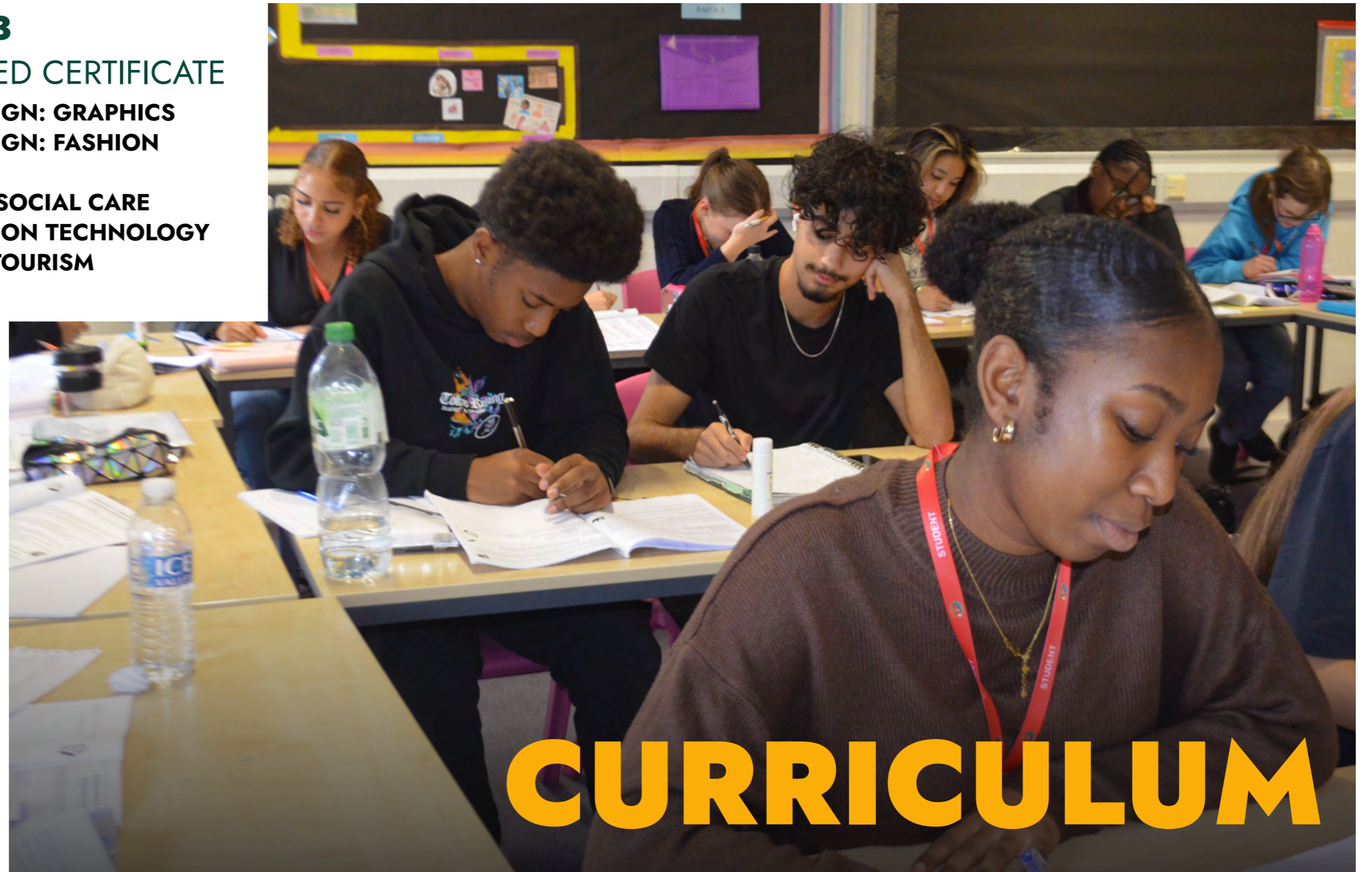
LANGUAGES

FRENCH
SPANISH

BTEC L3

EXTENDED CERTIFICATE

ART & DESIGN: GRAPHICS
ART & DESIGN: FASHION
BUSINESS
HEALTH & SOCIAL CARE
INFORMATION TECHNOLOGY
TRAVEL & TOURISM



CURRICULUM



ACT JUSTLY, LOVE TENDERLY, WALK HUMBLLY WITH YOUR GOD

MICAH 6:8

We are a Catholic school and our ethos is encapsulated in our school motto: “Act justly, love tenderly, walk humbly with your God”, which we encourage our students to live out daily. The students at our school carry out a range of charitable work, they work hard at their studies and they are proud of their faith, whatever faith that may be.





10

11

“IN THE SIXTH FORM, THE CURRICULUM ENABLES STUDENTS TO GAIN INCREASING MASTERY IN THEIR CHOSEN SUBJECTS. THEY DISCUSS THEIR KNOWLEDGE IN DETAIL AND WITH CONFIDENCE. THROUGHOUT THE SCHOOL, PUPILS ACHIEVE VERY HIGHLY.”

OFSTED NOV 2022





**“YOU’RE ENCOURAGED TO ACHIEVE
ACADEMICALLY BUT YOU’RE ALSO ENCOURAGED
TO HAVE FUN WHILE YOU’RE DOING IT”**

THE ART OF SUCCESS

14

15



In offering a broad range of Level 3 courses including BTEC, our Post-16 Curriculum is designed to excite and stretch students. We offer the Extended Project Qualification in Year 12 as well as Core Maths. We also offer the opportunity for students to resit GCSE Maths and English alongside their level 3 studies. Lessons in our Sixth Form are challenging and stimulating, and our teachers are highly effective practitioners. Students are encouraged to be ambitious and intellectually curious and they achieve excellent outcomes, moving on to universities that include Oxford, Cambridge and the Russell Group and to competitive courses like Medicine and Veterinary Medicine. Our full-time Academic Mentors work closely with Sixth Form students to ensure that they have the support that they need to excel in their studies and our Pastoral Manager works to provide outstanding pastoral care. We are proud to provide a personalised experience that caters to the individual.

WE ENCOURAGE OUR YOUNG PEOPLE TO TAKE POSITIONS OF RESPONSIBILITY WITHIN THE SCHOOL

We value most highly the contribution our Sixth Form students make through their volunteering roles as Head Student, members of the Head Student Team, Cafod Young Leaders, Liturgy Team, Community OutReach Team, mentoring younger students, charity fund raising and supporting older learners with learning IT skills. The many opportunities for extra-curricular activities include participating in the Lessons from Auschwitz course, Gospel Choir, Senior Choir, First Aid training, Gardening Club, Stay Active afternoon, cultural trips in London, an annual trip to Thorpe Park and to Europe for Christmas Markets.



“PUPILS ALSO TAKE PART IN AN EXCEPTIONALLY RICH RANGE OF EXTRA-CURRICULAR ACTIVITIES. FOR EXAMPLE, SIXTH-FORM STUDENTS WORK WITH A LOCAL COMMUNITY OUTREACH TEAM, WHICH IS SUPPORTING OLDER PEOPLE TO BOOST THEIR IT SKILLS.”

OFSTED





MOVING ON

2024 DESTINATIONS

BIRMINGHAM CITY UNIVERSITY

Social Work

BOURNEMOUTH UNIVERSITY

Fashion

CANTERBURY CHRIST CHURCH UNIVERSITY

Nursing (Child) with Foundation Year (2 students)

CARDIFF METROPOLITAN UNIVERSITY

Architecture

CARDIFF UNIVERSITY

English Literature and Creative Writing

CITY, UNIVERSITY OF LONDON

Psychology
Mechanical and Design Engineering/Foundation Year
Journalism, Politics and History

COLLECTIVE ACTING STUDIO

Acting

COVENTRY UNIVERSITY

Accounting and Finance
Architectural Engineering/ Foundation Year

DE MONTFORT UNIVERSITY

Criminology
Adult Nursing
Child Nursing

ESCAPE STUDIOS

The Art of Computer Animation

KING'S COLLEGE LONDON

Social Sciences
Pharmacy

LONDON METROPOLITAN UNIVERSITY

Business Management

LONDON SCHOOL OF ECONOMICS

Sociology

LONDON SOUTH BANK

Creative Media Production

LOUGHBOROUGH UNIVERSITY

Psychology (2 students)

MIDDLESEX UNIVERSITY

Primary Education
Biomedical/Foundation Year

NOTTINGHAM TRENT UNIVERSITY

Forensic Science
Economics
History
Computer Science with AI

OXFORD BROOKES UNIVERSITY

Foundation in Humanities

RAVENSBORNE UNIVERSITY LONDON

Motion Graphics

ROYAL HOLLOWAY, UNIVERSITY OF LONDON

Graphic Design
Social Science

ST. MARY'S UNIVERITY, TWICKENHAM

Primary Education with QTS

STAFFORDSHIRE UNIVERSITY

Computer Science with Placement Year
Biochemistry with Sandwich Year

UNIVERSITY OF LAW

Law (2 students)

UNIVERISTY OF BRIGHTON

Business Management with Economics
Psychology

UNIVERSITY COLLEGE LONDON

Psychology with Education

UNIVERSITY OF CHESTER

Zoology

UNIVERSITY OF CHICHESTER

Politics and International Relations

UNIVERSITY OF EAST ANGLIA

History

UNIVERSITY OF EAST LONDON

Education Studies
Special Education

UNIVERSITY OF GREENWICH

Nursing (Children's Nursing)

UNIVERSITY OF HERTFORDSHIRE

Biomedical & Healthcare Science
Engineering with Foundation Year
LLB Law/ Foundation year
Pharmacy

UNIVERSITY OF KENT

Criminology
Politics and International Relations/ Foundation Year
Business Information Technology
Biochemistry with Sandwich Year

UNIVERSITY OF LEEDS

Global Creative Industries

UNIVERSITY OF LINCOLN

Product Design

UNIVERSITY OF LIVERPOOL

Psychology

UNIVERSITY OF NORTHAMPTON

Forensic Psychology
Multimedia Journalism
Law with Criminology

UNIVERSITY OF NOTTINGHAM

Economics
Psychology

UNIVERSITY OF PORTSMOUTH

Theatre

UNIVERSITY OF READING

Psychology with Philosophy

UNIVERSITY OF SHEFFIELD

Economics

UNIVERSITY OF SOUTHAMPTON

Pharmacology with Drug Discovery

UNIVERSITY OF WARWICK

Education

UNIVERSITY OF WEST LONDON

Marketing/Social Media
Business Management/Foundation Year
Human Biology/ Placement
Nursing (Mental Health)

UNIVERSITY OF WESTMINSTER, LONDON


Cyber Security and Forensics
Computer Science

UNIVERSITY OF WOLVERHAMPTON

Adult Nursing / Foundation Year

UNIVERSITY OF YORK

Biochemistry



Our sixth form provides the opportunity for students to become effective independent learners, extend their academic knowledge and develop skills that will be invaluable at university and in the workplace. We also provide personalised support for students as they complete their UCAS application process, or as they apply for overseas universities, apprenticeships or employment.

All students complete an enrichment course, where they receive guidance and advice on time management for successful study, the university application process, revision skills and preparation for higher education. Guest speakers from universities, colleges, charities and private enterprises inspire our students to achieve, and we actively encourage our students to attend University and Apprenticeship Fairs, University open days and taster courses. The skills that they develop here equip them for whatever they may want to do in the future.



26

**"PUPILS VIEW THE SCHOOL AS A SAFE PLACE
THAT ALLOWS ALL TO FLOURISH AND FEEL
VALUED AND SECURE"**
DIOCESE OF WESTMINSTER

27



FACILITIES

Our purpose-built Sixth Form Centre provides excellent facilities including small seminar rooms for group work, a large common room where students can relax at break and lunch and where they can study during lesson time, classrooms with up-to-date IT facilities and a computer suite. There are also computers for students' use in the seminar rooms and common room as well as laptops that students can borrow for use in the Sixth Form Centre. Our catering company serve food in the Sixth Form Common Room at break and lunch and there are kitchenette facilities for students.

Our building is accessible, with an accessible toilet and a lift to the upper floors. Our main school building also has a chair-lift for students who may have lessons in some of the specialist rooms there, for example in one of the science laboratories or art studios.

We are very proud of the working environment in our Sixth Form. When they are not in lessons, our students have Supervised Study. This takes place in our Sixth Form Centre and students work quietly, under the supervision of a member of staff. We believe that students have a right to a quiet learning environment where they can focus and work productively.



ROLES & RESPONSIBILITIES

HEAD GIRL TEAM

2022 - 2023

Head Girl:
Divine Kitoko

- Aisha Ali
- Erin O’Callaghan
- Holly MacMurdie
- Michella Powell

2023 - 2024

Head Girl:
Lilly-Ann Edwards

- Alyss Condrea
- Excel Oziegbe
- Molly Williams
- Zanu Conteh

LITURGY TEAM

2022 - 2023

- Denecia Patterson
- Joelle Mortimer

2023 - 2024

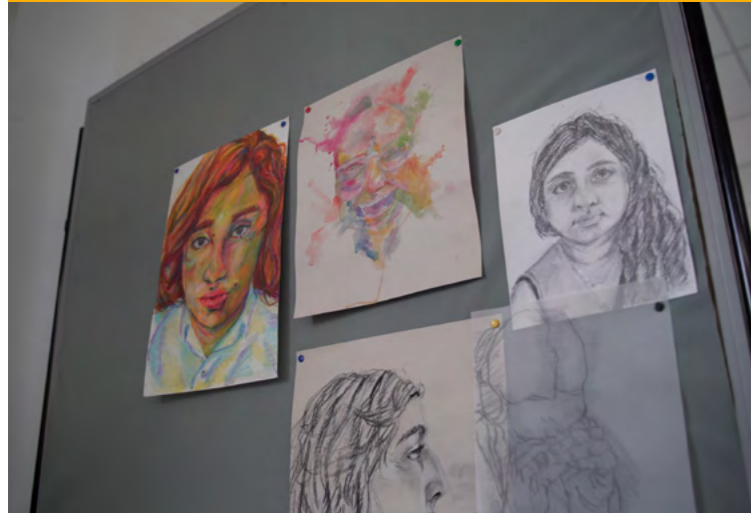
- Mary Kimulu
- Ifeanyi Nwachi-Odor

OTHER ROLES & RESPONSIBILITIES INCLUDE

- COMMUNITY OUTREACH TEAM
- CAFOD LEADERS
- IT-EXCHANGE

"EVEN IF I DID WANT TO GO TO ANOTHER SCHOOL THE TYPE OF ENERGY THAT YOU GET AT ST. ANNE'S DOESN'T REALLY MATCH TO OTHER SCHOOLS"

ZANU



"BECAUSE IT IS A SMALLER 6TH FORM AND IT'S NOT A HUGE GROUP LIKE YOU WOULD GET AT A COLLEGE, YOU REALLY GET TO KNOW EACH PERSON AND THE TEACHERS REALLY KNOW AND SUPPORT YOUR AMBITIONS"

AVA



"IT WAS A REALLY GOOD SCHOOL AND I KNEW I WAS GOING TO COME OUT WITH GOOD GRADES"

HOLLY



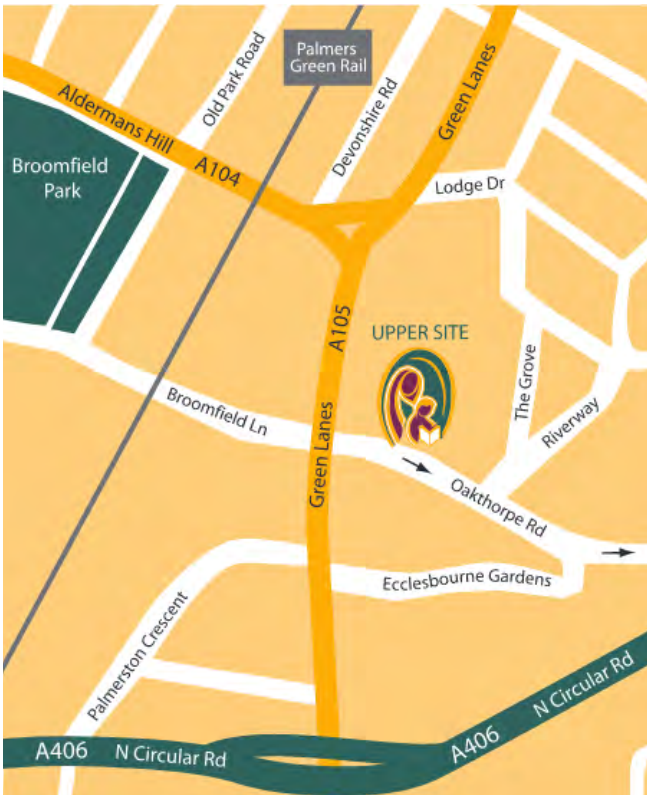


"I AM NOW IN MY THIRD YEAR AT LAW SCHOOL, AND CAN CONFIDENTLY SAY ST. ANNE'S PLAYED A CRUCIAL ROLE IN MY JOURNEY. IT HELPED ME BUILD AND SHOWCASE MY CONFIDENCE, AND I OWE A SIGNIFICANT PART OF MY CURRENT SUCCESSES TO THE EDUCATION AND SUPPORT I RECEIVED THERE"

OZGECAN
ALUMNI STUDENT SEPTEMBER 2024



ST. ANNE'S SIXTH FORM



PALMERS GREEN CAMPUS (YEARS 10–13)

6 Oakthorpe Road
Palmers Green, London
N13 5TY

Tel: 020 8886 2165

Email: sixthform@st-annes.enfield.sch.uk



WWW.STANNESIXTHFORM.CO.UK